



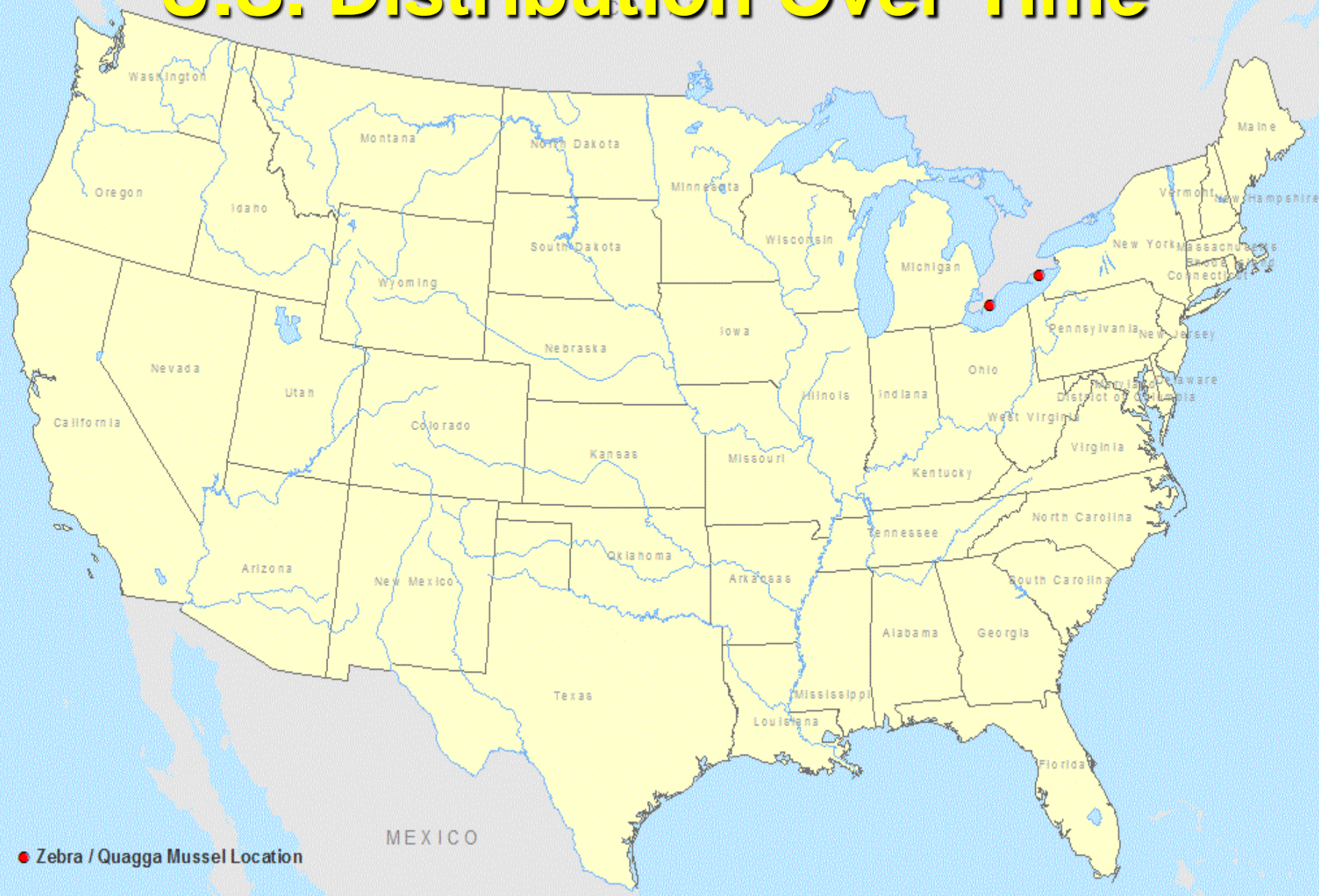
Invasive Exotic Aquatic and Wetland Species Update

Earl W. Chilton II, Ph.D.
Texas Parks & Wildlife
Austin, Texas

Zebra Mussels in Texas



1986 U.S. Distribution Over Time



● Zebra / Quagga Mussel Location

Source: U.S. Geological Survey, Nonindigenous Aquatic Species Database, April 2011

Zebra mussel

Dreissena polymorpha

Two confirmed
public reservoir
and one creek

Two watersheds to
date



Lionfish



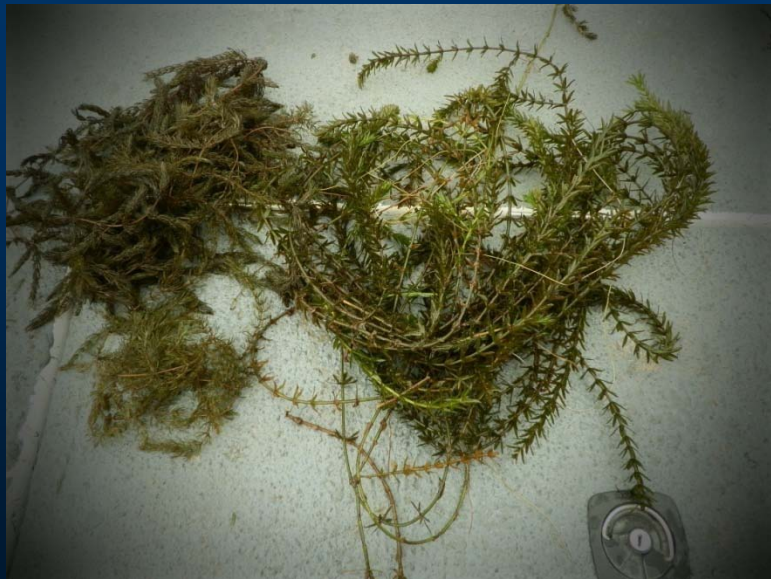
Tiger Prawn



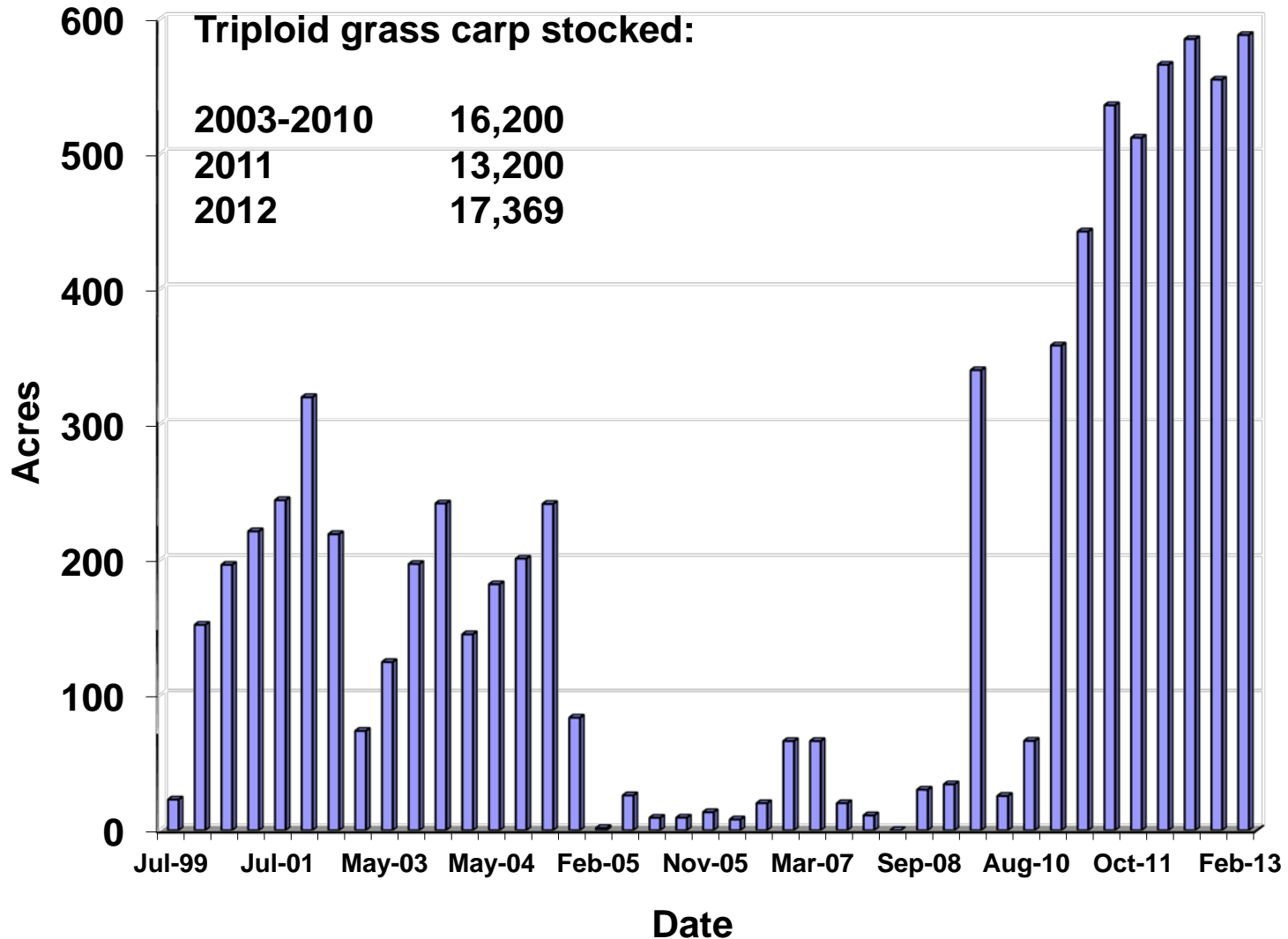
- Found in 60-100 feet of water
- Eat small bivalves
- Carry 16 known diseases
- Diseases are transferrable



Lake Austin

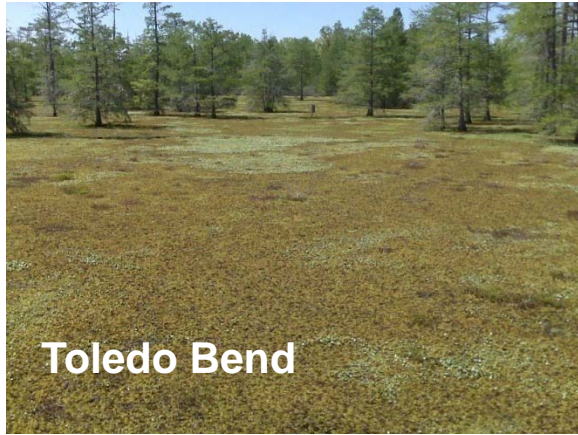


Hydrilla in Lake Austin

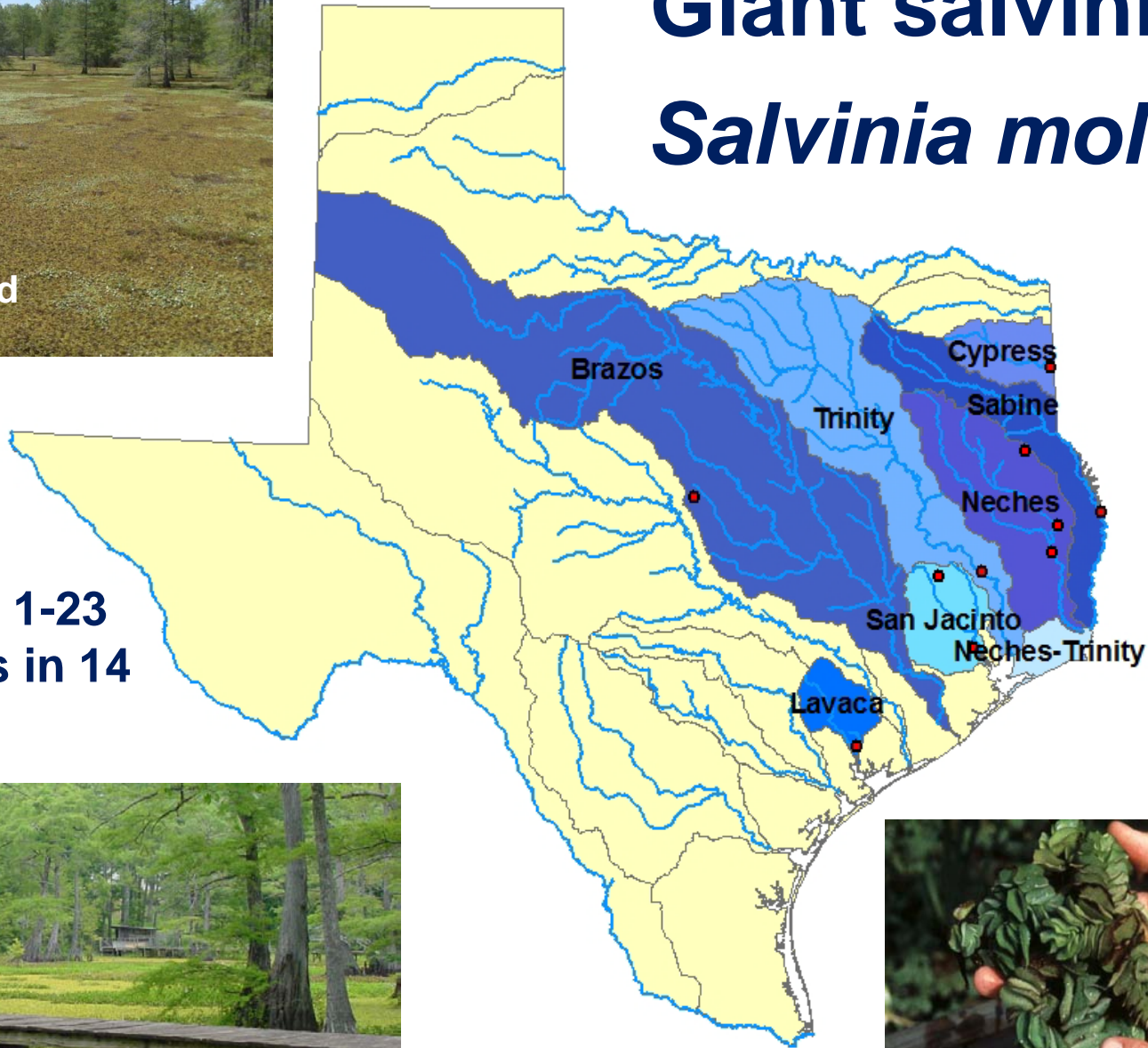


Giant salvinia

Salvinia molesta



Toledo Bend



Spread from 1-23
water bodies in 14
years



Caddo Lake

6,000-13,000 acres



Mature giant
salvinia

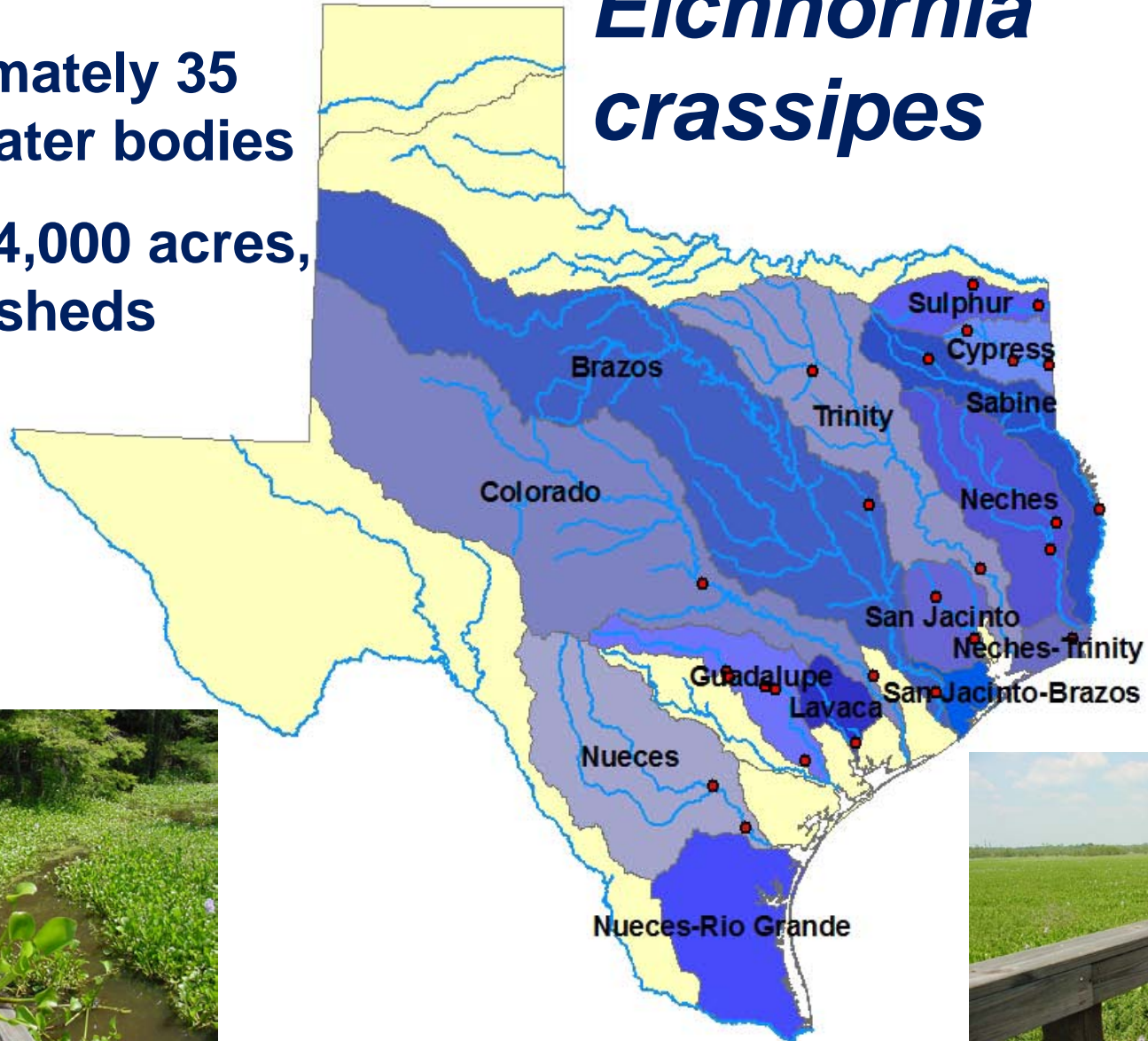
Toledo Bend



Water hyacinth *Eichhornia crassipes*

Approximately 35
public water bodies

6,000 - 14,000 acres,
14 watersheds



Llano River



Chinaberry



Giant reed



Elephant ear

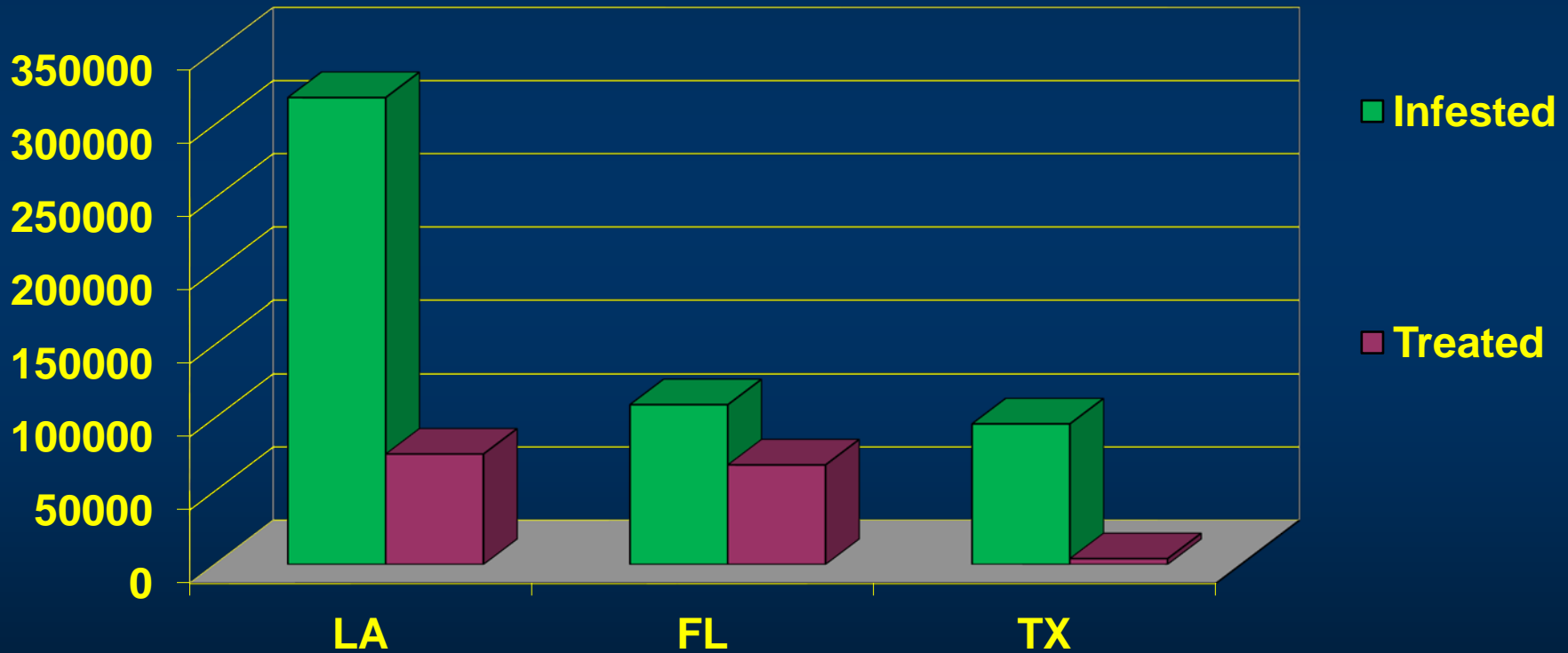
Elephant ear



Texas Pollutant Discharge Elimination System

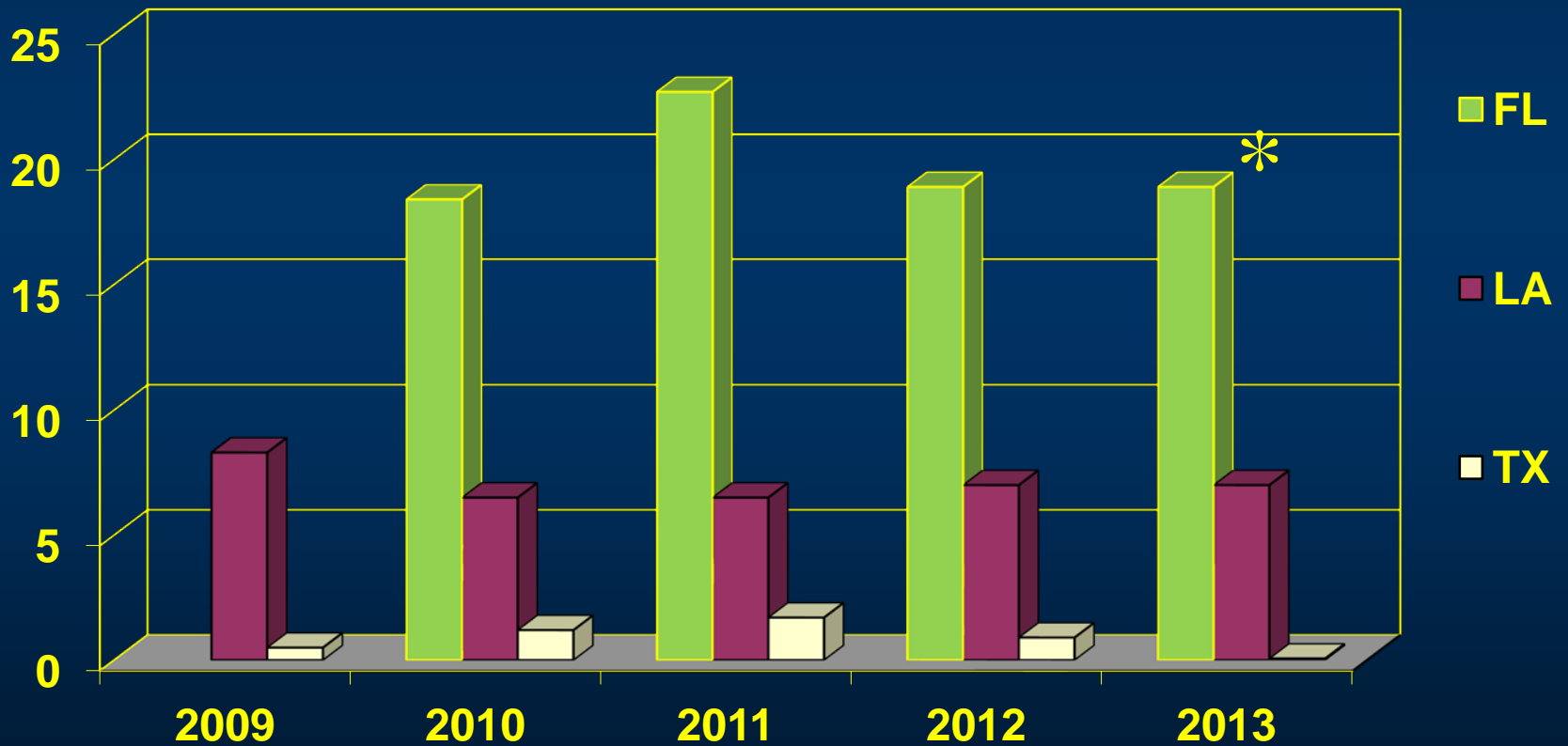
- On November 2, 2011 TCEQ approved a TPDES General Permits that Texas residents must adhere to
- A Certificate of Coverage was issued by TCEQ on March 9, 2012 certifying that TPWD is covered under the new TPDES General Permit.
- Compliance under the TPDES General Permit will require increased reporting, increased record keeping, and increased survey frequency.
- TPWD Staff have developed an automated record keeping and reporting system.

FY 2012 Invasive Plant Treatments (acres)



Expenditures for Treating Aquatic Vegetation

(Millions \$)





Thank
You!